



2006



2016



10TH ANNIVERSARY OF THE YAWURU NATIVE TITLE DETERMINATION

---

**2016 YAWURU PBC ANNUAL REPORT**  
**MABU BURU. MABU LIYAN.**  
**MABU NGARRUNGUNIL.**



---

## OUR VISION

### **MABU BURU. MABU LIYAN. MABU NGARRUNGUNIL.**

The Yawuru Community supports individual and family aspirations while being firmly rooted in the Bugarrigarra so that customary law and practice is a living part of family life and celebration.

The Yawuru community is an inclusive community that incorporates and enhances traditional Broome values of inclusiveness, hospitality and friendship. The Yawuru community believes that benefits flowing from the Native Title determination, while allowing rewards for personal endeavour, should always flow to the benefit of the community as a whole.

The Yawuru corporations invest to work for these aspirations and to create a Yawuru economy where families seek and have on-going opportunities for employment and business.

## CONTENTS

### **INTRODUCTION FROM THE CHAIRS**

### **MABU BURU GOOD COUNTRY**

LAND AND SEA  
FUTURE ACTS AND HERITAGE

### **MABU LIYAN HEALTHY FEELING**

COMMUNITY DEVELOPMENT  
LANGUAGE AND CULTURE  
HOUSING  
SOCIAL ENTERPRISE

### **MABU NGARRUNGUNIL GOOD COMMUNITY**

GOVERNANCE  
ECONOMIC DEVELOPMENT  
FINANCE  
HUMAN RESOURCES

### **LOOKING AHEAD**



---

# INTRODUCTION

This year is the 10th anniversary of Native Title for Yawuru people. It's a significant event and it gives Yawuru an opportunity to reflect on the distance that we have travelled over the last ten years. There remains much work to be done, but we have achieved much to be proud of.

While we have come a long way in ten years, our ambitions are the same as they were in 2006: *Mabu buru, mabu liyan, mabu ngarrungunil*

To achieve these ambitions we continue to strive for financial sustainability so that Yawuru can thrive culturally, socially and economically. As our organisation becomes stronger Yawuru is increasingly recognised as a significant and integral stakeholder in Broome's historical and future development. Our contribution to the region's culture, society and economy is respected and Yawuru is sought out as a partner with other significant regional stakeholders. To position our organisation for the future, we have renewed the Yawuru strategic 5 year plan and restructured Nyamba Buru Yawuru. A new management leadership team is now in place. Peter Yu (Chief Executive Officer) and Susan Bergersen (Chief Operating Officer) have already made a positive difference to our organisation.

NBY, like other businesses in Broome, faces challenges with the economic down-turn. NBY has responded by looking at

a range of innovative and varied ways of attracting long-term investment from both government and private entities and to reduce costs through efficiencies and organisational improvement.

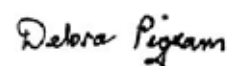
The highlights of the year include; the launch of the Nagalagun Marine Park and Birragun Conservation Park, the launch of Jetty to Jetty heritage walking trail, Yawuru's inclusion in the Broome Growth Plan Partnership with the Shire of Broome and other stakeholders, the Broome Youth Forum and the tenth anniversary and celebrations of the Yawuru Native Title Determination.

The former Federal Court Justice Ron Merkel, who handed down the Yawuru Native Title Determination in 2006, recently visited Broome. His visit served as a reminder of the faith and hopes that we had in 2006 which are now bearing fruit as we move into our second decade of growth and achievement.

Francis (Lulga) Djiagween  
Chair, Yawuru RNTBC (PBC)



Debra Pigram  
Chair, Nyamba Buru Yawuru Ltd



---

# MABU BURU

# GOOD COUNTRY

THE CONSERVATION ESTATE, LAND MANAGEMENT, RANGERS AND COUNTRY MANAGERS, LOOKING AFTER COUNTRY

## JOINT MANAGEMENT

The Land and Sea team has been working with partners Department of Parks and Wildlife (DPaW) and the Shire of Broome to complete the joint management plans for the Yawuru Conservation Estate.

Under joint management two major infrastructure projects have been completed in the Minyirr Buru In-town Conservation Park. Trail upgrades and infrastructure in Minyirr Park and new stairs and carpark at Simpson's Beach are the beginning of important works in these conservation parks. The DPaW Yawuru Rangers manage these projects in the Minyirr Buru Park on behalf of the joint partners Yawuru PBC and Shire of Broome.

## GEOGRAPHIC INFORMATION SYSTEMS (GIS)

The GIS mapping project has developed further this year and under the Australian National University partnership with Yawuru we are developing land use planning geospatial tools that are being used for land use decision making. The project continues to produce valuable data that will be used for land management but also assists with Yawuru cultural maintenance and revival programs such as Nurlu.

## COUNTRY MANAGERS

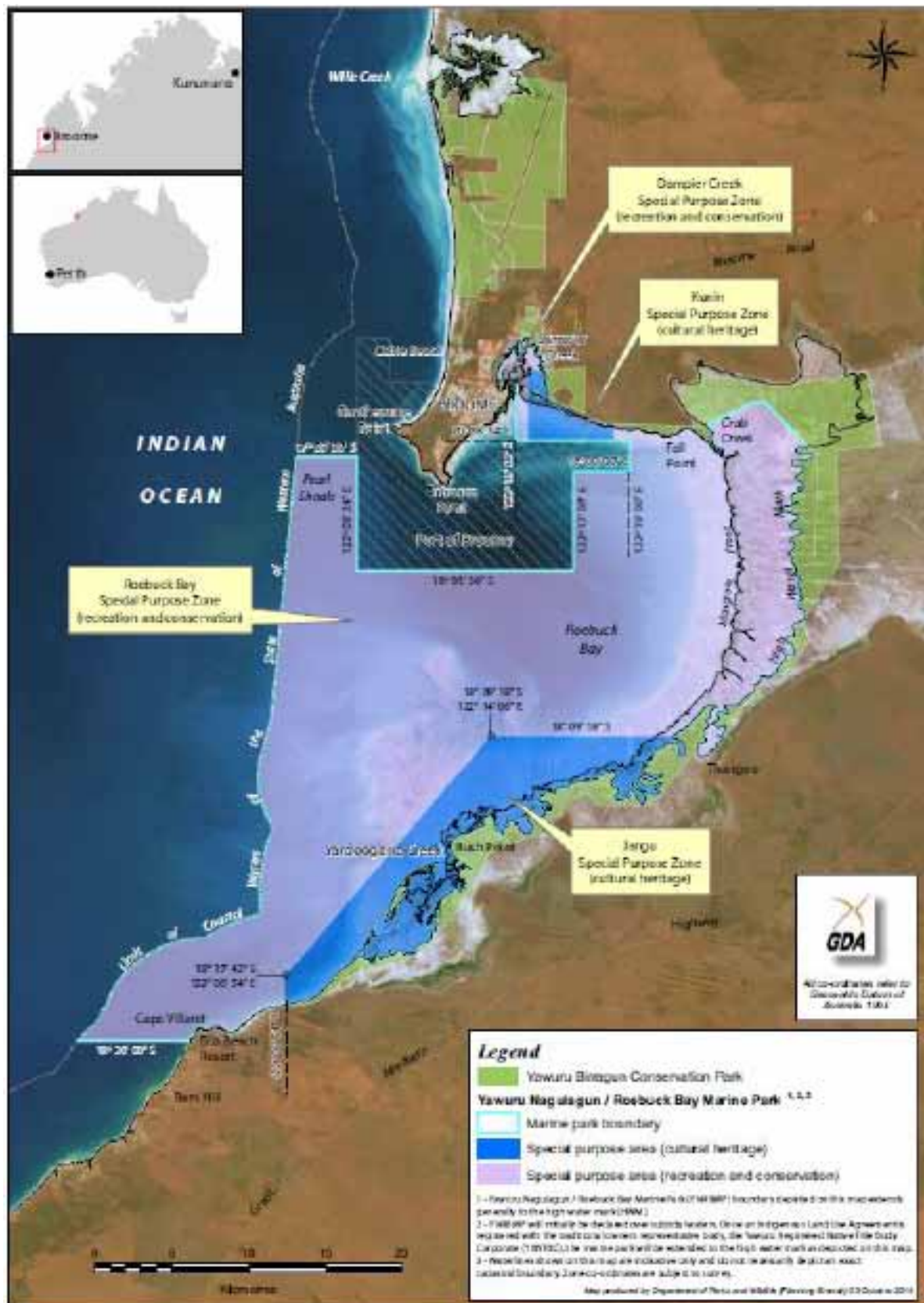
Five Yawuru Country Managers started with NBY just before last year's AGM to help manage and care for Yawuru country and to work on the Yawuru Indigenous Protected Area. They also collaborate with the DPaW Yawuru Rangers to look after Yawuru land and sea country across the Yawuru Conservation Estate. This year they have been busy undertaking many land management and cultural protection projects throughout Yawuru country.

The Country Managers have been undertaking their Certificate II in Conservation and Land Management. The training program has included prescribed burning, fencing, chemical and chain saw use, water quality monitoring. Projects include weed management at Sheep Camp and Minyirr Park, fencing of significant springs at Sheep Camp and in Ram Paddock on Roebuck Plains Station, bilby surveys, archaeological surveys at Sheep Camp and Crab Creek, vegetation mapping, photo point monitoring by seasons, fauna surveys and weed mapping. A highlight was attending the first national Bilby Festival at Kiwirrkurra community along with several other Kimberley native title ranger groups.

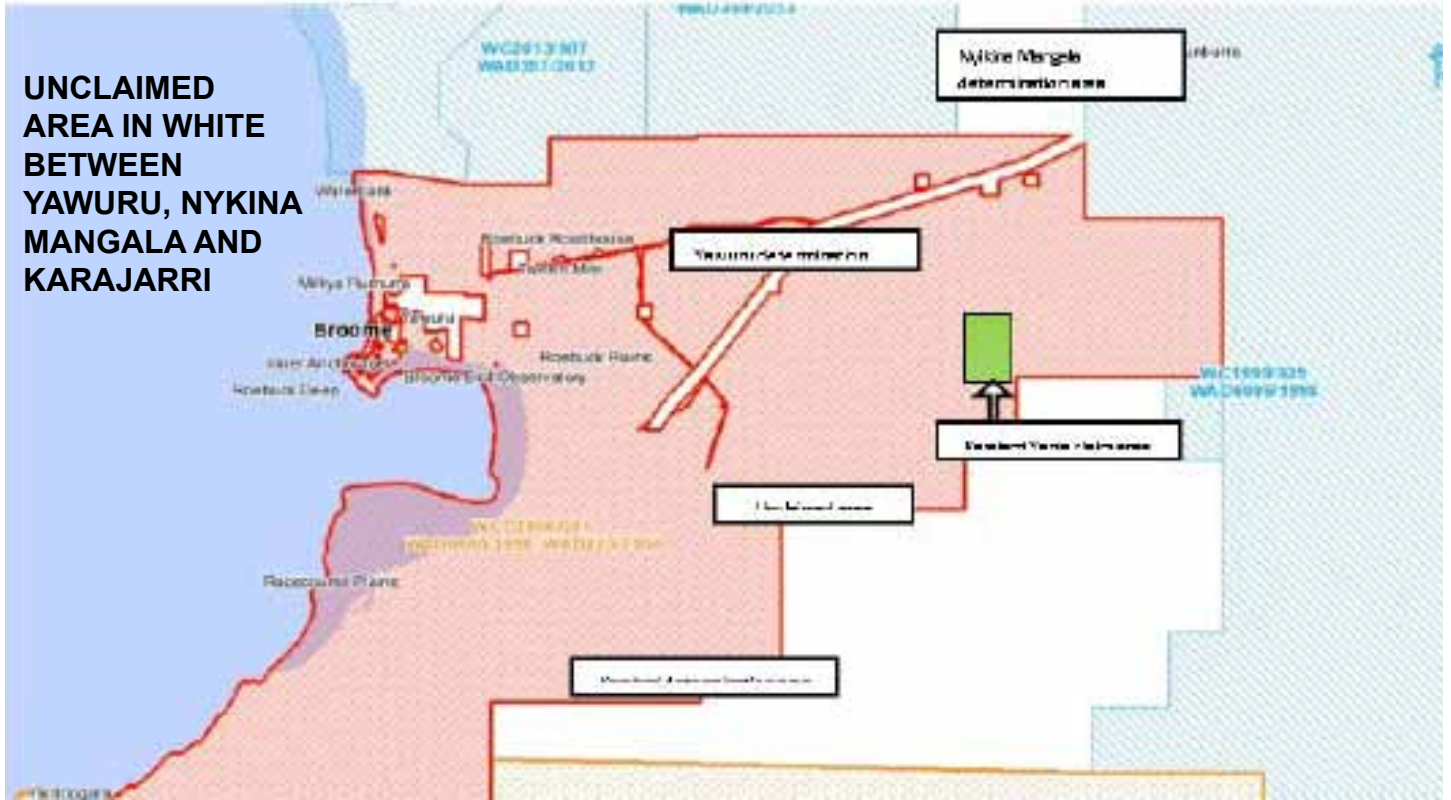
They have also participated in various activities of the Nurlu cultural revival project in collaboration with senior Yawuru people. Several fee for service projects have been undertaken including landscaping project at Broome Road Industrial Park, and fencing and conservation initiatives with the Roebuck Plains Station pastoral team.

This year Premier Barnett announced the creation of Nagalagun Roebuck Bay Marine Park and Birragun Conservation Park.

This is a critical step towards finalising the whole of the Yawuru Conservation Estate next year.



**UNCLAIMED  
AREA IN WHITE  
BETWEEN  
YAWURU, NYKINA  
MANGALA AND  
KARAJARRI**



**FUTURE ACTS AND HERITAGE**

**Future act notices, native title and cultural heritage protection**

Future Acts and Heritage discharges the Yawuru PBC’s core statutory obligations by responding to future act notices as well as protecting native title and cultural heritage. As part of NBY’s commitment to reduce operating costs, the position of Future Act and Heritage Manager and Senior Legal Officer has been combined. This position also encompasses the former Project and Negotiations Coordinator’s role. The FAH unit engages Yawuru Cultural Monitors and takes direction from the Yawuru Law Bosses, the Yawuru PBC board and Yawuru community of native title holders.

**EDARRBUR (RUBIBI #18) NATIVE TITLE CLAIM**

The management, preparation and lodgement of a new Yawuru native title claim over that part of the Stock Route within Roebuck Plains Station was undertaken in late 2015, culminating in the registration of the claim on 3 December 2015. The Kimberley Land Council has taken over as the legal representative for the claim to be finalised by the end of this year or early 2017, consistent with their statutory responsibilities as the Kimberley Native Title Representative Body. This means that over 113 square kilometres of Yawuru country will be added to the Yawuru determined area at minimal cost to Yawuru.

**SAND MINE LEASE APPLICATION AT DEEP CREEK**

The Edarrbur claim was lodged in order to obtain a right to negotiate before Eric Connolly’s sand mine lease was granted over an area of Deep Creek. NBY organised a face to face meeting with Eric Connolly and members of the Applicant group. Following this meeting, Eric Connolly agreed to withdraw his sand mine lease application resulting in the protection of this area from mining at minimal cost to Yawuru.

**SHEFFIELD RESOURCES**

Sheffield Resources is a WA-based mineral sands mining company working on the Thunderbird project near Mount Jowlaenga. Sheffield Resources has a number of exploration tenements which cross into Yawuru country on Roebuck Plains Station. NBY has negotiated with Sheffield to withdraw one of the company’s tenements which covered the proposed Yawuru Indigenous Protected Area on Roebuck Plains Station, helping to protect this environmentally and culturally important area.

**UNCLAIMED AREA BETWEEN YAWURU, NYKINA MANGALA AND KARAJARRI DETERMINATION AREAS**

Senior Yawuru people have been involved in constructive discussions over some months with the Kimberley Land



THE YAWURU COUNTRY MANAGERS

Council and senior representatives of Yawuru’s cultural neighbours, Nyikina Mangala and Karajarri, regarding the unclaimed area between the three determined areas.

## **BROOME POLICE STATION EXPANSION**

Yawuru received a proposal to upgrade the Broome Police Station which involved extending the existing fence line. This proposal would have impacted the culturally significant Kennedy Hill and Rubibi soak. The Law Bosses and PBC Board objected to the development and after Yawuru submissions, the Police agreed to confine the development within the existing fence line thereby safeguarding this area.

## **OBJECTION TO NOTICE OF INTENTION TO TAKE LAND (NOITT)**

Yawuru received a Notice from the Department of Lands regarding the proposed compulsory acquisition of Yawuru native title rights in an area within Thangoo pastoral station. The land in question is over 313 hectares and it was proposed to be added to the existing Port Smith Gravel Reserve 41357. Yawuru objected to the proposed taking of any native title rights that Yawuru people fought so hard to have recognised. Yawuru’s position is that instead of compulsory acquisition, the Department of Lands should negotiate an Indigenous Land Use Agreement based on the non-extinguishment principle (meaning that native title revives after the gravel pit is closed) and compensate Yawuru accordingly.

## **APPLICATION FOR PROTECTION OF SIGNIFICANT TRADITIONAL AREA - BILLINGURRU**

In September last year NBY lodged an application under the Aboriginal and Torres Strait Islander Heritage Protection (Cth) Act 1984 to protect the significant traditional Billingurru area. The application was made following development pressures on the sand dunes in this area. In October 2016 a notice about the application was advertised in the Broome Advertiser which means the application has now moved forward and will be considered by the Commonwealth Minister after a report has been prepared.



THE NEW STAIRS AT SIMPSON BEACH BUILT BY YAWURU RANGERS AND PARKS AND WILDLIFE

---

# MABU LIYAN

# HEALTHY FEELING

**COMMUNITY DEVELOPMENT** INVESTING IN COMMUNITY: YAWURU NGANG-GA, ELDERNS, YOUTH, COMMUNITY PROJECTS, HOUSING, TRANSITION TO WORK, SOCIAL ENTERPRISES, CULTURAL DEVELOPMENT, LIYAN NGAN NYIRRWA, MANGARA, EVENTS AND EXHIBITIONS

**“AS THE NEW COORDINATOR AT MABU YAWURU NGAN-GA I NOW FEEL LIKE I AM CONTRIBUTING TO MY GRANDMOTHER’S VISION TO KEEPING THE YAWURU LANGUAGE ALIVE.” - MAYA SHIOJI**

## **MABU YAWURU NGAN-GA**

### **Language Resource Centre**

Mabu Yawuru Ngan-ga provides for the long term wellbeing of Yawuru people by bringing Yawuru language back into regular daily use throughout the Yawuru community. Mabu Yawuru Ngan-ga ensures Yawuru language continues to be used in and around Broome on a daily basis now and into the future.

### **School Program**

Yawuru language has been taught in Broome schools for about thirty years. We want to help the Education Department expand the Yawuru program into all Broome schools, but there is a need for more Yawuru people to train as teachers. Our focus this year has been to train Yawuru adult speakers. Approximately 1000 children in Broome schools have access to the Yawuru Language Program and we would like to see this number increase.

### **Walalangga Yawuru Ngan-ga**

The Walalangga Yawuru Ngan-ga Immersion Program commenced in October 2016. The program aims to build a pool of 12 Yawuru speakers by 2020. This will help to develop more Yawuru language teachers and will expand the teaching of Yawuru to all Broome schools and child-care centres in the future. The program also aims to assist in building language learning as a family activity and restart the process of intergeneration language learning.

The program will run for two years and participants will be required to commit to 3 hour classes per day.

### **Miromaa Database & Dictionary**

We are putting Yawuru language information collected over many years into a database that will eventually become a website for Yawuru people. We have about three hundred recordings of Yawuru language already and many more to come. At the moment there are approximately four thousand Yawuru words in the database with meanings and other information. Many of the entries also have sentences to show how the word is used. Photos and artwork will help to illustrate words and phrases. This database will be checked thoroughly by Yawuru language experts before it is released as an illustrated dictionary and a website. It will take about two years to complete.

### **Computer Assisted Language Learning**

A series of digital Yawuru language learning lessons with recordings are being developed so people can practice and learn Yawuru language on their home computer. Workshops have been conducted to develop the program outline and we have also started learning how to record short language lessons.

### **Sharing our language & vision**

It is important that the Yawuru brand is clearly visible in Broome. It should be obvious to people arriving in Broome that they are in Yawuru country. Mabu Yawuru Ngan-ga and





MABU YAWURU NGAN-GA RNLD (RESOURCE NETWORK FOR LINGUISTIC DIVERSITY) TRAINING

**“WE ARE EMBARKING ON A NEW JOURNEY WITH YAWURU BY REVITALISING OUR LANGUAGE USING THE RECLAIMING OUR DOMAIN METHOD, BRINGING LANGUAGE BACK INTO OUR HOMES AND THE COMMUNITY.” COCO YU - YAWURU LANGUAGE SPECIALIST**

NBY are working with the Shire of Broome, Landcorp, DPaW and other corporations and small businesses to develop Yawuru language signs and plaques. Mabu Yawuru Ngan-ga has also helped provide Yawuru names for government department buildings and programs they operate in Broome.

## **ELDERS & COMMUNITY SUPPORT & EVENTS**

NBY assists Yawuru elders and others with special needs in our community. We do this by providing financial support for essential services, advocacy and liaison assistance with various services and agencies, home and gardening maintenance services and by supporting social and community engagement. Rosemary Coffin is Yawuru's Community Support Officer and she has worked with over 30 Yawuru elders and families in need through Elders and Disability Support and in assisting Yawuru bereaved families during funeral time.

NBY has also coordinated a number of community events including the annual Yawuru Christmas party and a major event to celebrate Yawuru's 10th anniversary since the signing of the global agreement. The highly successful 10th

anniversary event was held at Guwarri (Old Jetty / Town Beach) on Thursday 28 April 2016 and was attended by over 200 people.

## **YOUTH DEVELOPMENT**

NBY facilitated the Yagarmaburlanjin wanggalangu majanggula ('young people coming together') Broome Youth Forum on 14-15 July with 46 young people aged between 12-30 years participating. The forum provided opportunities for young people to develop their own action plans to work on issues in the local community. From the forum, a Yawuru Ambassador and Youth Steering Committee was established with four meetings already being held to progress their action plans and projects.

**“I COMMEND YAWURU FOR THEIR LEADERSHIP AND ALLOWING OTHER ABORIGINAL YOUTH WHO LIVE IN BROOME THE ABILITY TO PARTICIPATE. IT WAS GOOD TO SEE YOUTH OF ALL AGES TAKE PART AND ENCOURAGE EACH OTHER TO MAKE A DIFFERENCE IN THE COMMUNITY” – NESTOR JORDAN, YOUTH FORUM ASSISTANT FACILITATOR**

**“AS A YOUNG SINGLE MOTHER, I HAD AN AMBITION TO FURTHER MY EDUCATION AFTER NOT COMPLETING HIGH SCHOOL. THE SUPPORT PROVIDED BY NBY ENABLED ME TO GAIN THE RESOURCES I NEED TO DO MY STUDIES AND I AM PROUD TO SAY THAT I AM NOW ENROLLED AT NOTRE DAME UNIVERSITY DOING MY DIPLOMA OF COMMUNITY DEVELOPMENT.” – ENCOURAGING EXCELLENCE FUND RECIPIENT**

Yawuru’s youth program also facilitated two ‘Deadly Fun Runs’ in collaboration with the Indigenous Marathon Project. The event promotes healthy lifestyle and a drug free community. Over 200 participants, young and old completed the 3km fun runs along Cable Beach.

The Yawuru youth program works collaboratively with other Broome youth service providers on activities such as on-country trips for disengaged and at-risk males. Tonii Skeen, NBY’s Youth Development Officer, represented Yawuru in New Zealand and on the Aarnja Kimberley Youth Leadership Working group to develop and facilitate the 2016 Leadership Program.

The Yawuru Youth Encouraging Excellence Fund provided assistance to 19 Yawuru young people to assist them with educational and leadership activities.

## **EARLY CHILDHOOD DEVELOPMENT**

### **HIPPY (Home Interaction program for parents and youngsters)**

In February 2016, NBY commenced delivery of the national Home Interaction Program for Parents and Youngsters (HIPPY) in Broome. The program is a two year, home-based, early learning and parenting program for families with young children and helps prepare children for school. There are currently 13 families engaged in the program who participate in weekly home visits and group meetings.



TRANSITION TO WORK PARTICIPANTS

**“HIPPY IS AN OPPORTUNITY TO LEARN AND GROW FOR PARENTS AND THEIR CHILDREN.” HIPPY AUSTRALIA**

## **EMPLOYMENT & TRAINING**

### **Transition to Work (TtW)**

NBY was successful in the bid to deliver the Australian Government Department of Employment’s “Transition to Work” program. The new service provides support to 15-20 years olds to re-engage with education, training and employment, enabling them to obtain the skills and confidence they need to succeed in the workforce. The service started in March 2016 and we have had a total number of 35 clients engaged in the program.

**“YAWURU IS A GREAT EMPLOYMENT SERVICE TO OUR COMMUNITY. HELPING YOUNG PEOPLE STRIVE AND MEET THEIR GOALS. THEY HAVE HELPED ME A LOT WITH MY JOB AND OTHER SERVICES.” – COURTNEY COOPER, TTW PARTICIPANT**



BUSH MEDICINE FOR NURLU PROJECT

## CULTURAL DEVELOPMENT

Yawuru people have expressed a strong desire to spend time on country learning Yawuru beliefs and values, speaking language and sharing stories about places in Yawuru country. Through its diverse programs and projects, NBY has successfully engaged many sectors of the community in learning Yawuru culture and traditions.

### Nurlu

Nurlu is the Yawuru word for dance and performance also known as corroboree to others. It originates from the Bugarrigarra, when people feel with their Liyan to create a song about a place or an event or the movement of a particular animal and the sound it makes.

The aim of the Nurlu Project is to create a nation of Yawuru people reconnecting to Lore and rekindling Culture. Nurlu will provide empowerment to all, creating assistance and opportunities to allow Yawuru people to engage and feel a sense of fulfilment and pride for mabu liyan.

Over the past year a number of on-country trips have occurred and extensive consultation with senior Yawuru members to discuss and develop the Nurlu program. A major milestone saw the largest number of Yawuru children perform Nurlu at the 10th Anniversary of the Global Agreement, celebrations at Guwarri (Old Jetty / Town Beach) in April 2016. The children were taught and practiced Nurlu for weeks prior to the event at Minyirr Park. Acknowledgment should be made to the Karajarri representatives for their support in this process.

**“NURLU IS THE SPIRITUAL CREATION TO OUR CONNECTION TO EVERYTHING LIVING.” – DIANNE APPLEBY, YAWURU CULTURAL COORDINATOR**

**“IT WAS A GREAT OPPORTUNITY TO RE-CONNECT TO COUNTRY AND LEARN ABOUT CULTURAL HEALING WITH USE OF HEALING PLANTS. THE EXPERIENCE MADE MY LIYAN MABU.” – PROGRAM PARTICIPANT**

### Jan-ga Ngurun – Healing Smoke

Senior community elders have been important in developing a Cultural Healing program which includes the practice of conducting traditional smoking ceremonies. The program development phase involved a number of field trips on country for Yawuru people to share their language and cultural knowledge. The Yawuru language and cultural knowledge which was recorded will be used as a resource to pass onto younger generations.

### Welcome to Country & Yawuru Cultural Immersion

NBY has continued to deliver ‘Welcome to Country’ and Yawuru Cultural Immersion sessions to organisations and businesses in Broome.



## PLANS FOR LIYAN-NGAN NYIRRWA CENTRE

The Cultural Immersion Program is facilitated by Dianne Appleby and provides an overview of Yawuru cultural beliefs and values and an insight into the Yawuru community. In the past year seven Cultural Immersion programs were delivered to 83 participants from government agencies, private corporations and non-government organisations. .

**“IT HAS REALLY MADE ME REALISE THAT ABORIGINAL CULTURE IS VERY RICH AND COMPLEX.” – YAWURU CULTURAL IMMERSION PARTICIPANT**

“Welcome to Country” recognises Yawuru people as the traditional owners and native title holders of the Broome region. Observing and participating in this formal protocol and ceremony enables the wider community to share in Yawuru culture and heritage therefore building stronger and more respectful relationships between Yawuru people and the wider community.

In the past year 33 ‘Welcome to Country’ ceremonies have been conducted.

### **Yawuru Customary and Traditional Practice fund**

The conduct of Customary and Traditional Practice is an essential element of maintaining Yawuru Culture. The maintenance of Yawuru Customary and Traditional Practice is important for its inherent value to Yawuru members

and Yawuru society. This year, NBY have supported five applicants.

## **LIYAN-NGAN NYIRRWA**

Liyan-ngan Nyirrwa is a proposed Yawuru community and wellbeing centre.

The centre will be founded on the Yawuru Healing Model, and will support the full economic, social and cultural participation of indigenous people in the Broome economy. Development of the project has been assisted this year with \$3 million grant funding from Lotterywest. There has been further consultation about the design and investment from other stakeholders. The Community Reference Group has signed off on the final designs and submitted to the Shire for Development Approval.

## **COMMUNITY PROJECTS**

### **Cultural Reference Group**

The YCRG has been established as a sub-committee under the authority of the Yawuru Native Title Holders (PBC) to service and facilitate the existing and developing cultural and heritage interests of the community of Yawuru Native Title Holders.

The primary purpose and responsibility of the YCRG is to provide advice to the Yawuru PBC and NBY and any other Yawuru corporate entity from time to time as required in the development of policies, protocols and practices directly



JETTY TO JETTY PERFORMANCE AT SHINJU MATSURI

influencing and affecting the integrity of Yawuru cultural and heritage practices and obligations.

The members of this committee are Suzi Gilbert, Peter Edgar, Cissy Djiagween, Susan Edgar, Noreen Edgar, Maxine Charlie, Jimmy Edgar, Gordon Dixon, Kevin Puertallano, Wayne Edgar and Ben Dolby. There is also an open invitation to the Yawuru Law Bosses, NBY staff representatives and Directors.

### **Jetty to Jetty (J2J)**

The Jetty to Jetty Heritage Trail, the interactive walking trail from Streeter's Jetty to Town Beach, continues to impress visitors and locals. There were live performances during Shinju Matsuri and the project also won an AILA Tourism Landscape Architecture Award.

Over 70 Jetty to Jetty books have been sold through Magabala books. The Jetty to Jetty Tour is enhanced through a mobile app as a tour guide through the recorded stories of local Broome people.

### **Mangara Yawuru Storylines archive**

Maree Edgar has joined NBY as a Yawuru emerging curator. She will work alongside Suzanne Jess, who was appointed for 12 months as archivist and curator, to continue inputting data into the Mangara Yawuru Storylines archive. The digital archive stores materials, documents and recordings about Yawuru people and culture and is accessible to all Yawuru community members.

**“IT’S IMPORTANT FOR THE FUTURE, FOR OUR KIDS AND WE HAVE TO HOLD IT FOR THEM OTHERWISE IT WILL BE LOST, IT IS OUR RESPONSIBILITY.” - MAREE EDGAR**

### **Lustre Pearling Exhibition**

The Lustre Pearling Exhibition, curated last year by NBY in collaboration with the WA Museum, has travelled interstate. On 27 August, NBY chair Debra Pigram joined curator Sarah Yu to launch the exhibition in Melbourne. The exhibition is at the Immigration Museum until late January 2017 and then travels to Sydney.

### **Bugarrigarra Nyurdany**

Bugarrigarra Nyurdany means ‘Because of the Dreaming’. NBY has secured \$150,000 government funding to develop the Bugarrigarra Nyurdany exhibition that will tell Yawuru story of survival and resilience, from its foundation in the Bugarrigarra, weaving the Yawuru historical narrative through the cycle of seasonal change.

The Yawuru Mangara Storylines team and associates will use innovative and creative storytelling technologies that include art, sound, music and imagery to create a fresh look at Yawuru history, story and culture, revitalising old traditions and embedding them in new forms that reflect the ever-changing cycle of the six seasons of Yawuru country.

**“YAWURU CULTURE AND IDENTITY IS FOUNDED IN THE ALL-ENCOMPASSING POWER AND RICHNESS OF THE BUGARRIGARRA. IT IS THE CORE OF YAWURU COSMOLOGY AND OUR COUNTRY AND LAW. IT IS THE TIME BEFORE TIME, WHEN CREATIVE FORCES SHAPED AND GAVE MEANING TO THE LANDSCAPE. IT IS NOT DETACHED FROM CONTEMPORARY LIVES AND CONTINUES TO EXIST AS A SPIRITUAL FORCE THAT SHAPES OUR ONGOING CULTURAL VALUES AND PRACTICE, AND OUR RELATIONSHIPS.” - PATRICK DODSON IN THE YAWURU CULTURAL MANAGEMENT PLAN**

The process of developing the exhibition will train Yawuru curators and artists in multi-media skills.

The final exhibition will be housed as a permanent installation in the public spaces of the NBY offices, open to the general public to give the community of Broome and visitors an opportunity to understand the seminal relationship of Yawuru people to country and to appreciate the struggles and achievements that they have faced since the beginning of colonisation. It is due for completion in 2017.

## **HOUSING**

NBY Housing Programs continues to support and provide opportunities for tenants to transition along the housing continuum.

### **Jirril Mingaran Housing Program**

The Jirril Mingaran (meaning becoming strong, strong in the sense of everything, in mind body and soul) was implemented in December 2015. This Yawuru Housing Program is different to the previous Social Housing Rental Scheme as it fosters a Community Development approach; program participants are provided support in terms of their needs with additional support to assist them to build capacity for people to transition into their own secure housing.

The Yawuru housing team supports tenants and encourages them to be more self-sufficient, empowered, independent,

confident and able to break the cycle of welfare dependency. Tenants attend monthly meetings with the Housing Unit and achieve Tenancy Milestones, which are personal, realistic and achievable. As at the end of August 2016, 83 meetings have been held with tenants and 140 milestones achieved amongst them.

Since the program began, tenants have started new jobs and gained promotions at work, undertaken driving lessons and gained their driver's licences and saved up and bought their first cars.

Other personal milestones included opening savings accounts for a home deposit, starting studies at TAFE, joining the library and spending time reading with their children and attending more Yawuru community events and meetings. They have also volunteered time to assist NBY with events and mail-outs. Tenants have also successfully made improvements to property inspections and better managed the requirements of their tenancies.

**“YAWURU SOCIAL HOUSING SHOULD NOT JUST PROVIDE SAFE, SECURE HOUSING. IT CAN AND WILL BE AN ENABLER FOR SOCIAL CHANGE” – NINI MILLS, MANAGER COMMUNITY DEVELOPMENT UNIT**



YAWURU HOME OWNERSHIP FAMILIES

**“THE OPPORTUNITY HAS HAD A HUGE IMPACT ON ME IN VERY POSITIVE WAY. I FEEL A SENSE OF SECURITY FOR THE FUTURE OF MY SON AND ME. I FEEL VERY BLESSED TO HAVE THIS WONDERFUL OPPORTUNITY!!!”  
– SIMARA LEE NEYLON**

### **Rental Relief Housing Program**

There are five properties under the Rental Relief Housing Program. It offers a four year lease term as a transitional program for eligible Yawuru tenants to move into Home Ownership or other sustainable housing. There have been 34 people housed under the scheme since 2012 (15 children and 19 adults). Two families have since transitioned out of the program into home ownership.

### **Yawuru Home Ownership Project**

In April 2015 the Yawuru Home Ownership Project (YHOP) was launched. The project uses Royalties for Regions funding through the Kimberley Development Commission (KDC) to provide eight moderate income Yawuru families the opportunity to achieve home ownership through a shared equity arrangement with NBY.

The project was successfully completed in March 2016 with all eight home owners' houses in Yawuru's Birragun Buru estate, completed. Yawuru are currently having discussions with the State Government to expand the YHOP to incorporate more Yawuru families.

### **The Yawuru Housing Community Reference Group**

The aim of Yawuru Housing Community Reference Group (YHCRG) is to provide community feedback on issues relating to the development, implementation and evaluation of current and new Yawuru Housing Policy & Programs. Community representatives are voluntary and the group provides an opportunity for interested community members to get involved, share ideas and contribute to the future of Yawuru Housing.

The group has met five times this year and members include: Philip Matsumoto, Gina Albert, Barbara Peek, Rose Coffin, Maxine Charli, Danielle Mills and Deb Pigram.

**“TENANTS MUST BE SET UP TO SUCCEED” - COMMUNITY REFERENCE GROUP MEMBER**

---

# MABU NGARRUNGUNIL

## GOOD COMMUNITY

NEW STRUCTURE, GOVERNANCE, COMMUNITY MEETINGS, YAWURU PBC MEMBERSHIP, REVIEW OF THE ILUAS, SHIRE RATES

### **STRATEGIC PLAN**

Yawuru conducted a review of the first five year strategic plan for 2010 - 2015 and approved a new plan for 2015 - 2020.

Nyamba Buru Yawuru Ltd has recently undergone an internal management restructure to bring it into line with the new strategic plan, streamlining operations and saving costs. In the new Strategic Plan, development of Corporate Governance continues to ensure effective governance for the Yawuru Corporate Group.

### **GOVERNANCE**

Throughout the year, all Boards of the Yawuru Corporate Group have been involved in governance training and development. Directors continue to be engaged with native title and cultural issues which will ensure the continued economic, social and cultural sustainability of Yawuru.

The Yawuru Corporate Group has improved its corporate governance and operations with the new management team and as a result of the Governance development programme.

Since the 2015 AGM the PBC Board met thirteen times, the NBY board met eight times and MMY Board met three times. Combined meeting of the Boards were held three times over the year.

All the Boards were involved in strategic planning for the future and with the new strategic plan, NBY is able to be more efficient and forward-thinking in its operations. This helps to position Yawuru as significant stakeholders in Broome, and as an organisation that is respected in the wider Kimberley region and beyond.

### **Community meetings**

Three community meetings were held since the 2015 AGM on the 29 April 2016, 6 July and 6 October 2016. This has improved communication with the Yawuru community which is consistent with the new strategic plan. The meeting on the 6 July 2016 was held on country at Minyirr Park and was a welcome change for the community members who attended.

### **Yawuru PBC membership**

There are currently 1038 members of the Yawuru PBC and 67 new members were approved by the Board since the 2016 AGM.

Genealogies of the Yawuru ancestors and their descendants are the foundation of Yawuru native title and membership of the PBC. The genealogies have been continuously updated during the year to ensure they are accurate.





REPRESENTATIVES OF ALL YAWURU BOARDS OF DIRECTORS AND EXECUTIVES

**CORPORATION**

**FUNCTIONS**

**DIRECTORS**

**MEETING DATES**

AS AT 30 JUNE 2016

**YAWURU PBC**

The Yawuru PBC represents the Yawuru community and holds their native title in trust and makes decisions about native title, country, culture and community.

The PBC consults the Yawuru community to get their free, prior and informed consent about important decisions.

The PBC is the only member of MMY and appoints its directors.

PBC Directors:  
Francis 'Lulga' Djiagween (Chairperson)  
Thomas Edgar (Acting Chairperson)  
Patrick Dodson  
Neil McKenzie  
Dean Mathews  
Debra Pigram  
Maxine Charlie  
Rosemary Coffin  
Leah Dolby

22 July 2015  
17 September 2015  
27 October (Combined Boards).  
12 November AGM 2015  
24 & 26 February 2016  
23 March (Combined Boards),  
14 April 19 May 8 June,  
24 June, 20 July 2016  
20 August 3 October (Combined Boards,) 2016  
18 October 20



**MURRA MALA YAWURU PTY LTD.**

MMY is the fence which separates Yawuru cultural land and assets from NBY. MMY is a holding company and is the only member of NBY.

MMY appoints the Directors of NBY.

Darren Puertollano  
Diane Appleby  
Leah Dolby  
Maxine Charlie  
Sherena Bin Hitam

27 October 2015.  
19 November 2016 AGM  
23 March 2016 (Combined Boards)  
3 October 2016 (Combined Boards)



**NYAMBA BURU YAWURU LTD**

NBY is a Not for Profit organisation and registered charity.

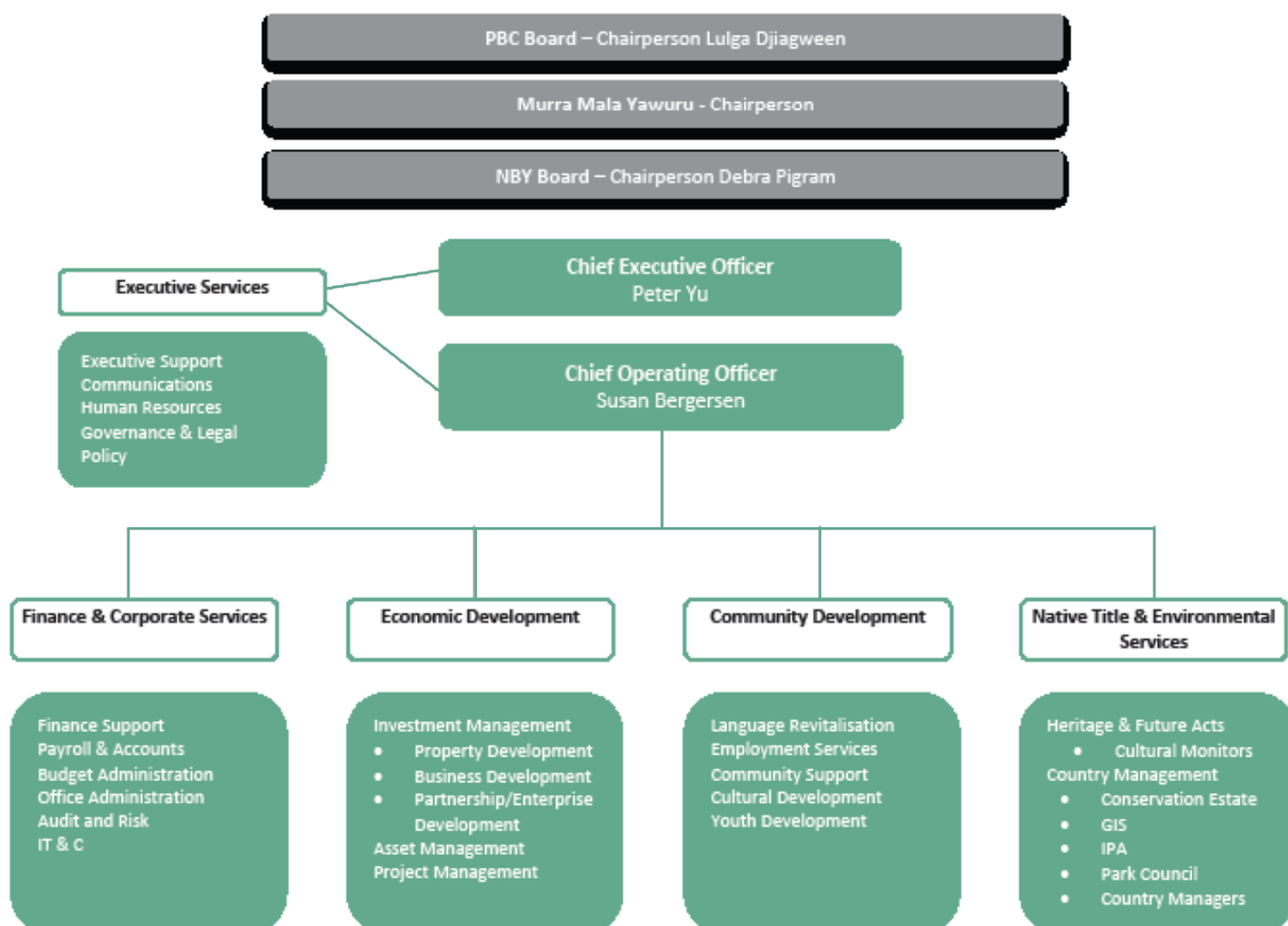
It delivers programs and services to Yawuru people and other indigenous people in the Broome area. NBY employs staff to support the Yawuru Corporate Group

Debra Pigram (Chairperson)  
Cara Peek (Deputy Chairperson)  
Roseanne Healy (Independent Director)  
Antoine Bloemen (Independent Director)  
David Puertollano

26 August 2015  
27 October 2015 (Combined Boards)  
19 November AGM 2015  
11 December 2015  
10 February 2016  
23 March 2016 (Combined Boards)  
24 May 2016  
27 June 2016  
4 August 2016  
3 October 2016 (Combined Boards)



MEMBERS OF THE PBC BOARD OF DIRECTORS





MANG-GALA APARTMENTS IN JANUBURU

## Review of Yawuru ILUAs

The review of the Yawuru strategic plan included an audit and a review of the implementation of the Yawuru PBC and Area ILUAs. As a result the PBC Board authorised a constructive engagement with the State of Western Australia and the Shire of Broome to jointly review the ILUAs. This has recently commenced.

## Shire Rates

The NBY Litigation Sub Committee and management have been involved in extensive mediation in the State Administrative Tribunal with regard to a dispute with the Shire of Broome about rates. The mediation has been largely unsuccessful and the proceedings will now proceed to a hearing in the Tribunal in May 2017.

## Human Resources

The 2015 - 2020 strategic plan is currently being implemented, with annual Operational Plans guiding our new leadership team in the development of the enterprises, social and cultural programs.

The new Strategic plan is based upon, and links directly to the Yawuru Mission and Values: Mabu liyan, mabu buru, mabu ngarrungunil

The new NBY structure is fully staffed and introduces operational, communications and staffing efficiencies by having a less management heavy organisation and greater interaction between Units.

## ECONOMIC DEVELOPMENT

Property development, finance and human resources.

Yawuru as the native title holders of the Broome and surrounding area and the Shire are the two main stakeholders in Broome's future development.

Yawuru has invested time and energy into developing strategic partnerships with the Shire, the Chamber of Commerce and Industry, the State Government and community organisations like the Broome Regional Aboriginal Medical Service (BRAMS). This will entrench Yawuru's place within the community as an active and participatory player in a range of areas including economic and social development.

Yawuru is part of Broome's growth and its reputation as a drawcard for business, tourism and investment.

NBY is working on commercial enterprises to build Yawuru's assets for the future and provide long term sustainable income streams from these activities. But the general economic downturn has seen sales of Birragun Buru lots slow down, along with an overall decline in the property market.

We continue to pursue commercial developments such as the 'bulky goods' site and other business plans like the feedlot development, to diversify Yawuru's investments and make sure Yawuru is in a good position to take advantage of opportunities when the market improves.

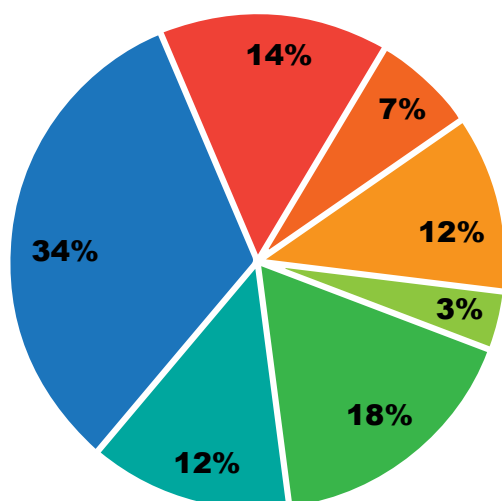
# FINANCE

## THE MONEY STORY

2015-16 FINANCIAL YEAR

WHERE IS THE MONEY COMING FROM?

### OPERATING EXPENSES



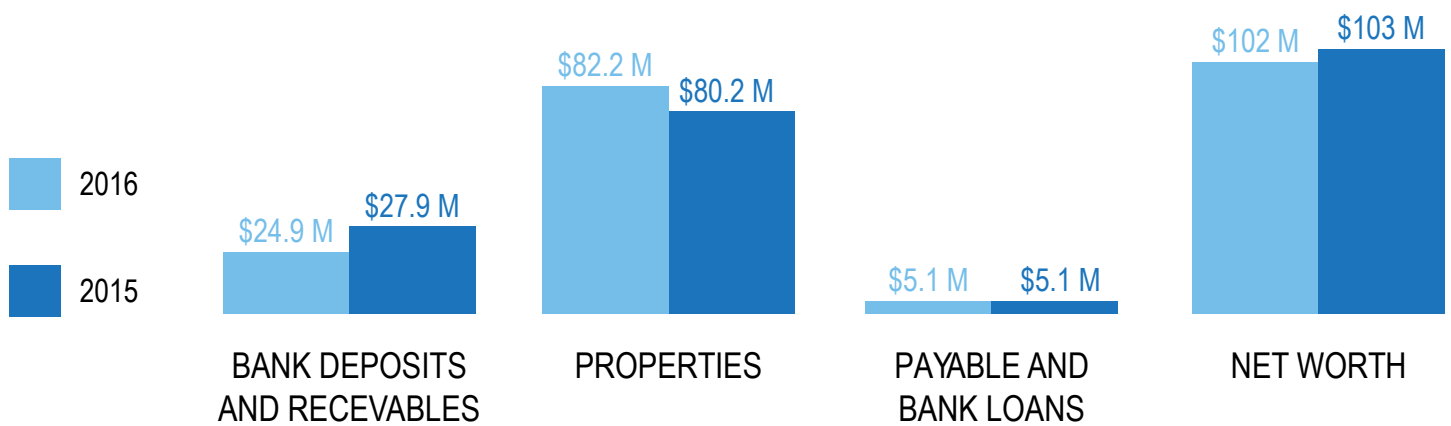
- GOVERNANCE & ADMINISTRATION
- COMMUNITY & CULTURAL DEVELOPMENT
- LANGUAGE CENTRE
- HOUSING
- SOCIAL ENTERPRISE
- NATIVE TITLE & ENVIRONMENT
- ECONOMIC DEVELOPMENT

The operating expenses for the financial year totalled \$8,345,539. This graph illustrates the total operating expenses across the corporate group, divided into service areas.

### ANALYSIS OF YAWURU'S CORPORATE GROUP PROFIT OR LOSS:

PROFIT OR LOSS	2015-2016	2014-2015
OPERATING INCOME	4,969,219	4,564,561
OPERATING EXPENSES	8,345,539	7,478,350
OPERATING LOSS	(3,376,320)	(2,913,789)
PROPERTY DEV. PROFIT	335,972	533,735
OTHER GAINS	1,994,548	20,807,355
NET OVERALL PROFIT/(LOSS)	(1,045,800)	18,427,301

Overall, while the net economic value (properties) of the Yawuru corporate group has grown, the core operations are not yet self-sustaining. **In the coming years we aim to maximise profit by diversifying our revenue sources; maximising the benefits of our investment strategy and developing policy to enable new opportunities to be identified or confirmed.** In addition, NBY is implementing corporate efficiency measures that will reduce operational costs.



**THE YAWURU INVESTMENT STRATEGY WAS APPROVED BY THE NBY BOARD ON 23 MARCH 2016.**

In 2015-16 the Yawuru corporate group had a net operating loss of \$3.3 million, which means that our operating expenses were \$3.3 million more than our operating income for the year.

However, Yawuru received other non-cash and non-operating gains this year by acquiring at no cost properties such as Lot 250 Gubinge Road valued at \$1.6 million based on an independent valuation at no cost. These non-cash, non-operating gains reduced the overall loss to \$1 million for the year.

During the year ended 30 June 2016, the group sold land held for resale with a total carrying value of \$1 million for \$1.3 million resulting in a gain on sale of land of \$0.3 million.

**THE INVESTMENT STRATEGY**

The Yawuru investment strategy was approved by the NBY Board on 23 March 2016.

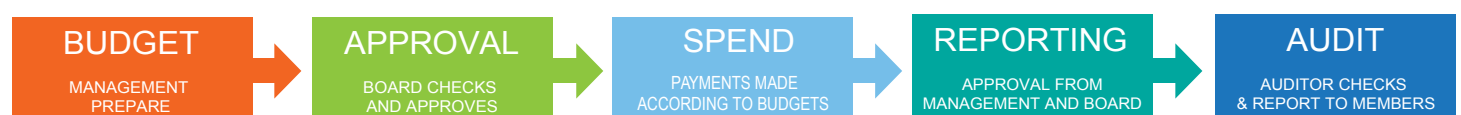
NBY is using a reputable Custodian (Perpetual Trustees) who will be responsible for safe keeping our investments and cash transfers. We are investing through professional Investment Managers who have been researched and

recommended by our adviser FORM. The Investment Managers are licensed by the regulator and their operations meet formal compliance and governance standards.

\$14 million is to be invested in a management investment scheme aimed at achieving recurring annual investment income (via interest, dividends, leases, and rent and fees) for Yawuru of \$2 million per annum by July 2017.

**MAJOR SOURCES OF INCOME INCLUDED**

\$1.6 million gain from acquisition of Roebuck Plains Station at no cost; property development (e.g. sale of Birragun Buru lots); commercial rents (e.g. Roebuck Plains Station lease) residential rents (e.g. Manggala apartments, social housing and rental relief properties); interest and investments (e.g. term deposits and cash in bank); grants (e.g. Indigenous Protection Area grant, Yawuru Home Ownership Program; Indigenous Languages Support).





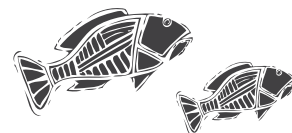
# HIGHLIGHTS OF THE YEAR

## NOVEMBER 2015

LOTTERYWEST FUNDING FOR LIYAN-NGAN NIRRIYA CENTRE RECEIVED  
PUBLIC ACCESS TO THE MANGARA SONG LINES ARCHIVE  
EDABURR (RUBIBI #18) NATIVE TITLE CLAIM LODGED WITH FEDERAL COURT

## DECEMBER 2015

YAWURU COMMUNITY CHRISTMAS PARTY  
EDABURR (RUBIBI #18) NATIVE TITLE CLAIM REGISTERED ON NATIONAL NATIVE TITLE REGISTER

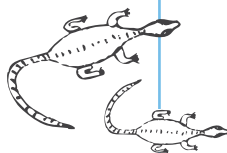


## JANUARY 2016

CULTURAL MANAGEMENT PLAN DIGITISED (3RD EDITION)  
HIPPIE PROGRAM STARTED

## FEBRUARY 2016

GRANT FOR BUGARRIGARRA NYURDANI EXHIBITION RECEIVED

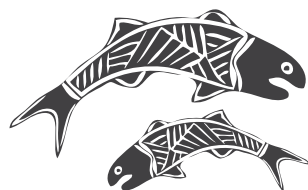


## MARCH 2016

REPATRIATION OF FIELD TAPES FROM AIATSI  
TRANSITION TO WORK PROGRAM LAUNCHED  
INITIAL DEVELOPMENT APPROVAL FOR LIYAN-NGAN NIRRIYA CENTRE

## APRIL 2016

PETER YU JOINS NBY AS CEO  
LAUNCH OF THE JETTY TO JETTY HERITAGE WALK AND MOBILE APP  
10TH ANNIVERSARY OF YAWURU NATIVE TITLE DETERMINATION: FIRST NURLU PERFORMANCE  
ILUKA RESOURCES HERITAGE SURVEY



## MAY 2016

SUSAN BERGERSEN JOINS NBY AS COO  
MARINE PARK 'NETTING ACCORD' INFORMATION SESSION

## JUNE 2016

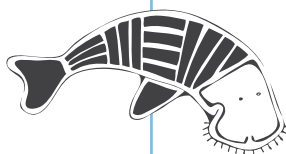
NAIDOC KIMBERLEY INDIGENOUS SALTWATER SCIENCE PROJECT  
MEETING BETWEEN EDABURR APPLICANTS AND ERIC CONNOLY

## JULY 2016

SUNDOWNER WITH THE BROOME CHAMBER OF COMMERCE AND INDUSTRY  
ROEBUCK PLAINS LAND USE PLANNING WORKSHOPS  
NAIDOC WEEK  
OBJECTION LODGED TO INTENTION TO TAKE  
WANALA CONFERENCE IN KALGOORLIE  
BROOME YOUTH FORUM  
COMMUNITY MEETING AND ACTIVITY DAY AT MINYIRR PARK

## AUGUST 2016

LUSTRE PEARLING EXHIBITION OPEN IN MELBOURNE  
LAUNCH OF 'COMMUNITY WELLBEING FROM THE GROUND UP: A YAWURU EXAMPLE'  
AUTHORISATION OF THE NAGALAGUN ROEBUCK BAY MARINE PARK ILUA  
CORRUGATED LINES FESTIVAL OF WORDS: DREAMTIME SOTRIES  
MCCORRY BROWN HERITAGE SURVEY



## SEPTEMBER 2016

JETTY TO JETTY LIVE EVENT IN SHINJU MATSURI FESTIVAL  
NEW EMERGING CURATOR WORKING ON MANGARA ARCHIVE  
JIRRIL MINGARAN HOUSING BALLOT  
CULTURAL ADVISORS DISCUSS UNCLAIMED AREAS.

## OCTOBER 2016

LAUNCH OF THE NAGALAUN ROEBUCK BAY MARINE AND BIRRAGUN  
CONSERVATION PARKS  
COMMUNITY MEETING  
WALALANGAA YAWURU NGAN-GA LANGUAGE PROGRAM STARTS  
SARAH YU PRESENTATION OF 'MAKING THE INVISIBLE VISIBLE' IN GERMANY



---

## LOOKING AHEAD



The last ten years have seen Yawuru advance in leaps and strides to develop a sustainable and respected enterprise that supports our community now and into the future. We can look back and feel pride in achievements including entrenchment of Yawuru language learning across a number of community groups, strong partnerships in land management, the Yawuru Conservation Estate, enterprise development and ongoing support for the young and the elderly in our community.



However, looking ahead to the next ten years and beyond, we need to take a strategic approach to ensure we are building on our enterprises, to consolidate the respect that we have gained within the region and our ability to support and enable our Yawuru members to be strong and engaged. We look forward to being able to capitalise on important projects such as the completion of the entire Conservation Estate, and the building of the Liyan Ngan Nyirrwa Centre that will put Yawuru wellbeing at the heart of its enterprises. Yawuru will be sustainable if we are leaders in collaboration with our partners. Our partners are looking to Yawuru for leadership as we move to a new and inclusive economy, and the NBY leadership team is working to ensure Yawuru is in the best position to maintain the growing respect and engagement in regional affairs and development that will allow us to build on the work we have done over the last ten years.




What sets Broome apart and makes us special is Yawuru's cultural connection with the extraordinary natural environment and unique multicultural heritage.

That is Yawuru's competitive advantage and it's the strength of our tourism industry, education, research and will inspire future investment by Commonwealth and State governments in Yawuru's regional leadership. Increasingly the Shire, governments and industry appreciate that Broome will prosper through serious public and private investment in this unique combination of location and cultural heritage.



 [www.facebook/yawuru](http://www.facebook/yawuru)

 [@YawuruAU](https://twitter.com/YawuruAU)

**[www.yawuru.com](http://www.yawuru.com)**

PH 08 9192 9600 FAX 08 9192 9610  
PO BOX 425, BROOME WA 6725  
55 REID RD, CABLE BEACH WA 6726